

Product code: 475565 EAN: 5907777475565

## LED line LITE Outdoor wall mounted luminaire LED 2x3W 4000K IP54 gray CILINDER

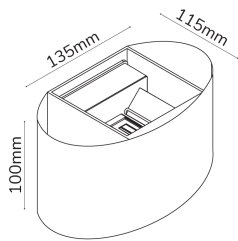
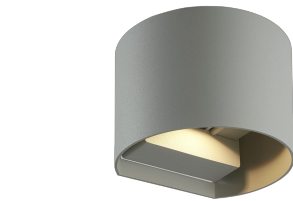
### Product description



We present the futuristic CILINDER outdoor wall lamp.

- The CILINDER outdoor wall lamp was created for all those who appreciate timeless yet modern solutions.
- The main advantage of the luminaire is that it can be adjusted upwards and downwards.
- Provides complete flexibility to set the upper flux from several to 120 degrees and the lower flux independently. You can adjust the light flux to your needs and preferences.
- CILINDER luminaires are offered in three colours (white, black and grey) and each of them in two colour temperatures 3000K (warm) and 4000K (neutral).
- The solution is energy efficient.

This state-of-the-art product will prove its worth in private buildings, as well as in the walkways and communal areas of elegant residential complexes.



Manufacturer issues a 3-year warranty for this product.



FLICKER FREE™ system guarantees no harmful flickering effect and ensures safety for users' eyesight.



IP protection rating



Voltage range and voltage type



Material (cover)



LED type



Power Factor



Ambient temperature suitable for operation



This product is suitable for surface-mounted installation.



Lifespan



Beam angle



Material (housing)



LED quantity



Number of on/off cycles



IK protection rating

Name of the parameter	Value
Correlated colour temperature	4000 K
Energy efficiency class 2019/2015	G
Colour consistency in McAdam ellipses	≤6
IP protection rating	54
Warranty (years)	3
Beam Angle adjustable	Yes
Contain icon	NonRepl1+NonRepl2
Dimmable function	No
Survival factor	0.9
Lifetime L70B50	30000
Number of sources	2 pcs
Coating UV resistance	YES
Dimensions (L x W x H.)	13,5x11,5x10cm
Current	0,052
Supply voltage range and voltage type	100- 260V AC
Frequency of the supply voltage	50/60Hz
Colour rendering index Ra	80
The lumen maintenance factor	96
Beam angle	0-120 °
Material (cover)	glass
Material (housing)	PVC
LED type	2835 SMD
LED quantity	14
Lifespan	30000
Power Factor	0,5

Name of the parameter	Value
Number of on/off cycles	20000
Colour consistency in McAdam ellipses	≤6
Ambient temperature suitable for operation	-20 ÷ 40 °C
For indoor and outdoor use	YES
IK protection rating	05
EPREL ID	1366460
Date of first placement on the market	2023-02-13
Displacement factor Df	0.7
Form of the product (EPREL)	Source Out
Angle for useful luminous flux (EPREL)	Sphere 360 degrees
Is the product equipped with an integrated light source? (EPREL)	Yes
Non-directional or directional light source (EPREL)	NDLS
Is this product a light source? (EPREL)	No
Mains or non- mains light source (EPREL)	MLS
Chromaticity coordinates x i y (EPREL)	0.38 0.377
Connected light source (EPREL)	No
Colour-tuneable light source (EPREL)	No
Total luminous flux (EPREL)	490
On-mode power Pon (EPREL)	6
Useful luminous flux Φuse (EPREL)	490
Beam angle in degrees (EPREL)	120

## Pre-packaging



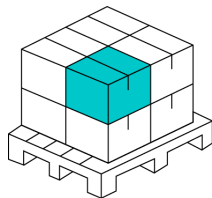
Type

Width [mm]  
Height [mm]  
Length [mm]  
Weight [kg]

### Shipping carton

**110**  
**110**  
**110**  
**0,3**

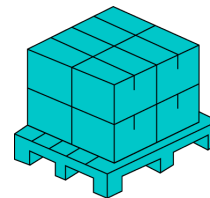
## Cumulative packaging



Number of pieces  
Width [mm]  
Height [mm]  
Length [mm]  
Weight [kg]  
Volume [m<sup>3</sup>]  
Type of carton box

**40**  
**570**  
**460**  
**240**  
**13,1**  
**0,0629**  
**Cardboard**

## Europallet



Number of pieces  
Bulk quantity  
Weight [kg]  
Weight [kg]  
Pallet height [mm]  
Quantity in 1 layer  
Number of layers

**840**  
**18**  
**225**  
**225**  
**1800**  
**6**  
**3**